

# MONTHLY MEMBERSHIP PROGRESS REPORT

LOCATION TEXAS

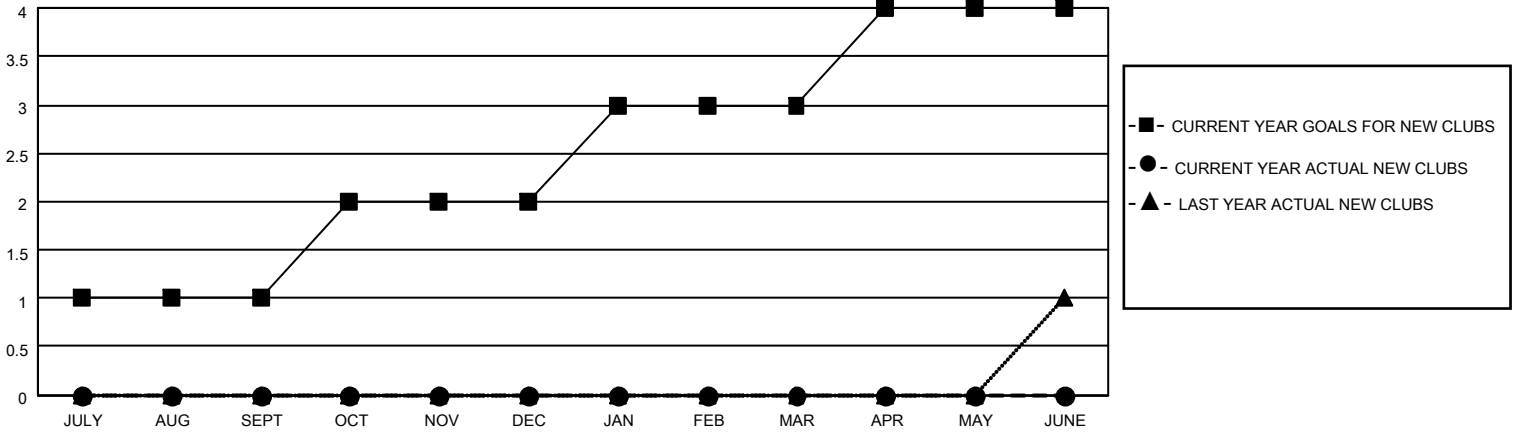
District 2 A3

Results as of: 6/30/2022

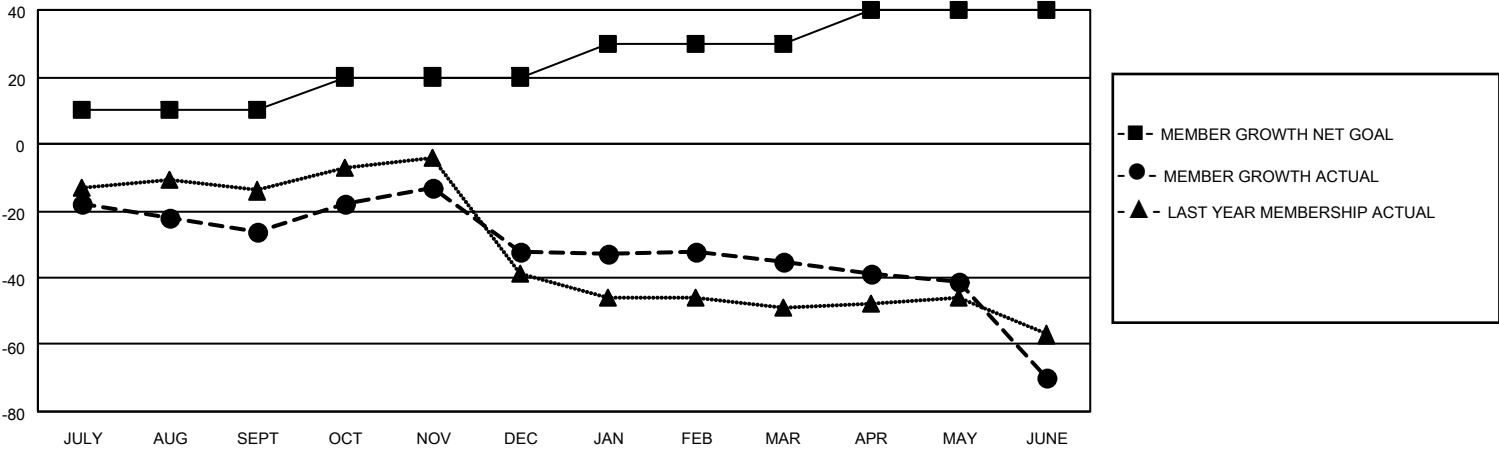
Clubs			
RESULTS FOR 2021-2022			
QUARTER	NEW CLUB GOAL	NEW CLUBS	DROPPED CLUBS
JULY/AUG/SEPT	1	0	2
OCT/NOV/DEC	1	0	1
JAN/FEB/MAR	1	0	0
APR/MAY/JUNE	1	0	0

Members			
RESULTS FOR 2021-2022			
QUARTER	MEMBER GROWTH NET GOAL	MEMBER GROWTH ACTUAL	DROPPED MEMBERS ACTUAL (including transfers)
JULY/AUG/SEPT	10	41	60
OCT/NOV/DEC	10	39	43
JAN/FEB/MAR	10	29	23
APR/MAY/JUNE	10	52	80

**GOALS AND ACTUAL NEW CLUBS CUMULATIVE**



**GOALS AND ACTUAL MEMBERS CUMULATIVE**



DROPPED CLUBS: 3	
<u>DROPPED MEMBERS</u>	
DECEASED	24
CLUB CANCELLED	28
OTHER	154
<b>TOTAL</b>	<b>206</b>

34 CLUBS OF 55 ADDED 1 OR MORE NEW MEMBERS

[CLICK HERE FOR CUMULATIVE MEMBERSHIP DATA](#)

<u>GENDER DISTRIBUTION</u>	
MALE	669 (60.05%)
FEMALE	445 (39.95%)
NON BINARY	0 (0.00%)
PREFER NOT TO ANSWER	0 (0.00%)
<b>TOTAL FAMILY UNIT MEMBERS</b>	<b>203</b>
<b>FAMILY MEMBERS PAYING HALF DUES</b>	<b>110</b>